



Single head 4K30 or dual head
1920 x 1200 support

Realtime KVM Access via 1G IP networks
to Draco tera matrix systems

Compatible to existing Draco tera installs
via Draco tera IP Gateway

Compatible with all
Draco vario chassis solutions

PRODUCT INFORMATION

Access flexibility

The Draco vario IP Gateway consoles provide seamless integration into Draco tera KVM matrix applications via IP network infrastructure. Instead of using dedicated Cat X or fiber optic links, the new IP based consoles make use of Gigabit Ethernet topologies, allowing for more flexibility accessing via Draco tera KVM matrix switches attached target computers. KVM connections with up to 4K30 resolutions single head or 1920 x 1200 dual head are supported across 1G IP connections in real-time.

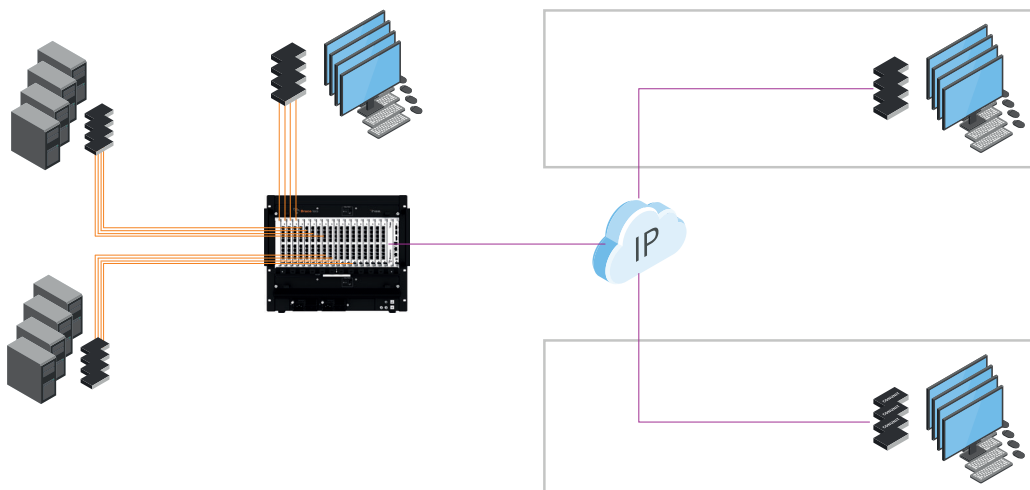
Network simplicity due to hybrid setup

Since the core KVM matrix system still is based on easy to setup proprietary connectivity, it is way easier to provide individual consoles flexible IP access. Requirements on the network infrastructure are a sufficient bandwidth and low latency for maintaining the highest performance. Complexity such as Multicast, IGMP, Jumbo Frames are not to worry about, thanks to the hybrid KVM architecture.

To integrate a Draco vario IP Gateway CON into an already operational KVM system, users only need a Draco tera enterprise or Draco tera flex matrix switching system with an IP Gateway interface and 1G/10G network infrastructure.

This hybrid KVM setup with its mix of proprietary and IP connected endpoints offers completely new levels of flexibility and connectivity.

CONSOLE ACCESS VIA IP TO DRACO TERA MATRICES



TECHNICAL DATA															
Output	Primary channel: 1x DisplayPort 1.1 Secondary channel: 1x Mini DisplayPort 1.1														
Audio (embedded)	Stereo Linear Pulse Code Modulation (LPCM), DTS, DTS-HD (5.1), Dolby Digital, Dolby Digital Plus (5.1)														
Service Interface	Mini-USB														
Maximum Resolution	<table border="1"> <tr> <th>Single head operation (primary channel)</th> <th>Dual-Head operation (primary and secondary channel)</th> </tr> <tr> <td>1920 x 1080 @ 120 Hz (reduced blanking)</td> <td>1920 x 1080 @ 60 Hz (reduced blanking)</td> </tr> <tr> <td>1920 x 1200 @ 60 Hz (normal blanking)</td> <td>1920 x 1200 @ 60 Hz (reduced blanking)</td> </tr> <tr> <td>1920 x 1200 @ 120 Hz (reduced blanking)</td> <td></td> </tr> <tr> <td>2560 x 1440 @ 60 Hz (normal blanking)</td> <td></td> </tr> <tr> <td>3840 x 2160 @ 30 Hz - UHD (reduced blanking)</td> <td></td> </tr> <tr> <td>4096 x 2160 @ 30 Hz - 4K DCI (reduced blanking)</td> <td></td> </tr> </table>	Single head operation (primary channel)	Dual-Head operation (primary and secondary channel)	1920 x 1080 @ 120 Hz (reduced blanking)	1920 x 1080 @ 60 Hz (reduced blanking)	1920 x 1200 @ 60 Hz (normal blanking)	1920 x 1200 @ 60 Hz (reduced blanking)	1920 x 1200 @ 120 Hz (reduced blanking)		2560 x 1440 @ 60 Hz (normal blanking)		3840 x 2160 @ 30 Hz - UHD (reduced blanking)		4096 x 2160 @ 30 Hz - 4K DCI (reduced blanking)	
Single head operation (primary channel)	Dual-Head operation (primary and secondary channel)														
1920 x 1080 @ 120 Hz (reduced blanking)	1920 x 1080 @ 60 Hz (reduced blanking)														
1920 x 1200 @ 60 Hz (normal blanking)	1920 x 1200 @ 60 Hz (reduced blanking)														
1920 x 1200 @ 120 Hz (reduced blanking)															
2560 x 1440 @ 60 Hz (normal blanking)															
3840 x 2160 @ 30 Hz - UHD (reduced blanking)															
4096 x 2160 @ 30 Hz - 4K DCI (reduced blanking)															
Keyboard / Mouse	USB-HID														
Optional Interfaces	-														
Maximum transmission range to network switch	Cat X: 140 m Single Mode Fiber: 10 km														
Power Supply	Power supply via the used Draco vario chassis*														
Current Draw	Max. 1.600 mA per extender module (power input via the used Draco vario chassis)*														
Dimensions	20 x 129 x 143 mm														
Weight	100 g														
Chassis / Mounting Accessoires	Suitable Draco vario chassis and mounting accessories under the following link: https://www.ihse.com/chassis-accessoires/														
Updatable	Via Onboard flash														

* For detailed information refer to the user manual.

ORDER NUMBERS

DRACO VARIO IP GATEWAY CON SERIES 483		PART NO.
Draco vario IP Gateway CON module DP1.1, DH, 4K30 o. 2x1080p, USB HID, Cat X 1G		IP-R483-B2HC
Draco vario IP Gateway CON module DP1.1, DH, 4K30 o. 2x1080p, USB HID, Fiber LC SM 1G		IP-R483-B2HS
Draco vario IP Gateway CON module DP1.1, DH, 4K30 o. 2x1080p, USB HID, Cat X 1G, red.		IP-R483-B2HCR
Draco vario IP Gateway CON module DP1.1, DH, 4K30 o. 2x1080p, USB HID, Fiber LC SM 1G, red.		IP-R483-B2HSR



IHSE offers an online tool for free configuration of your KVM projects. It enables documentation and verification of individual extenders up to complete matrix applications. All KVM switches and extenders are available for selection, including add-on modules, chassis variants and special accessories: dsd.ihse.com